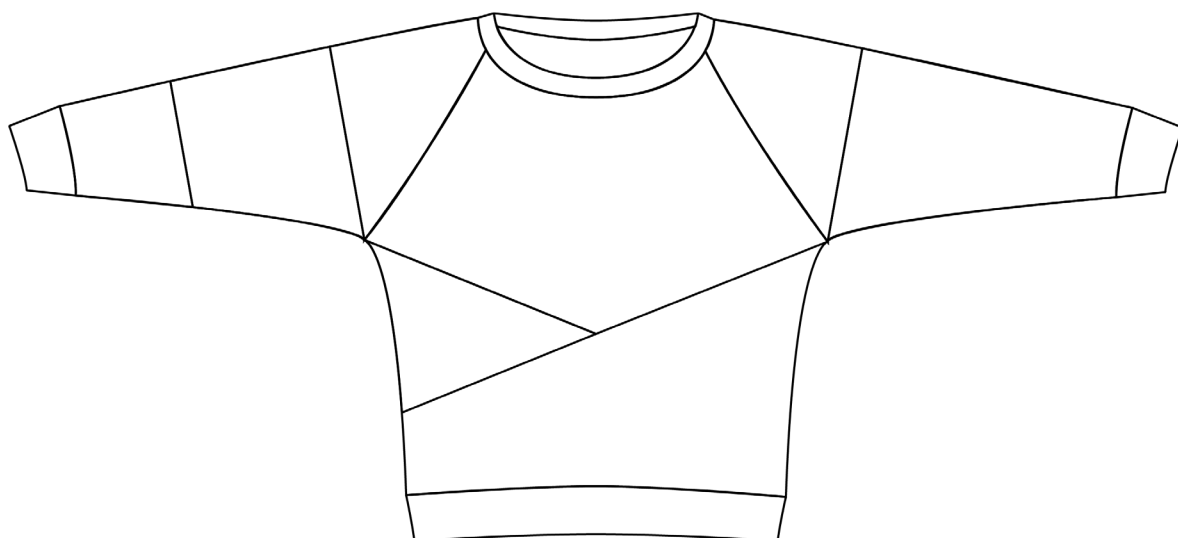
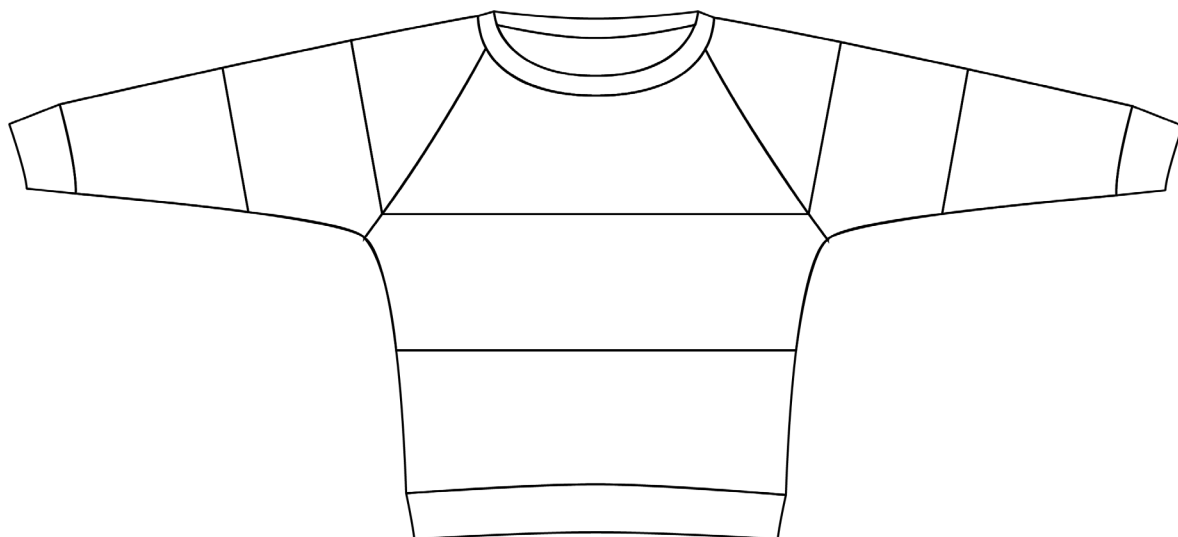




Sizes
80 - 158

*Stripes en pieces
colorblock options*



Questions or problems?
Feel free to contact me:
Email: info@beletoile.com

Thanks for downloading this sewing pattern!
I would like to point out that all content of this pattern is copyright protected.
It is therefore not allowed to share the PDF file or printed copies of the pattern with others.
The files cannot be shared in facebook groups.
This pattern is only intended for personal use.
Any reproduction or resale of this pattern is forbidden by law.
It is allowed to make copies for personal use.

It is allowed to use that pattern for selling *finished items in small quantities*, after written permission by the designer and by indicating the name of the pattern and the link to the website.

Would you like to give a *workshop* with the pattern?
Contact me for the conditions.

Happy sewing!
Isabel



Printing instructions

You can print the pattern yourself at home on A4 or letter paper.

- download the pattern, save and close the file

- Open the file from where you saved it.

- check the box 'actual/real size'

- check the box 'auto' at the print position

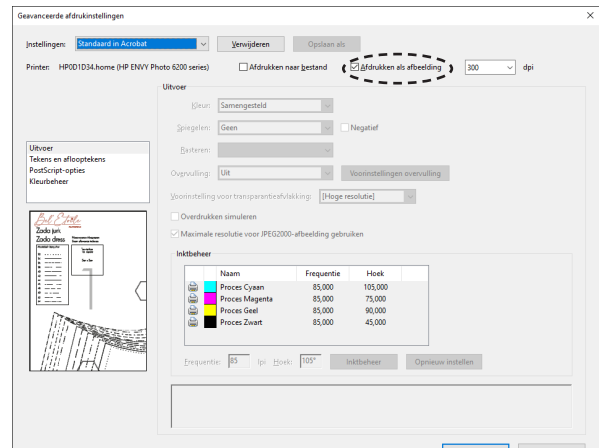
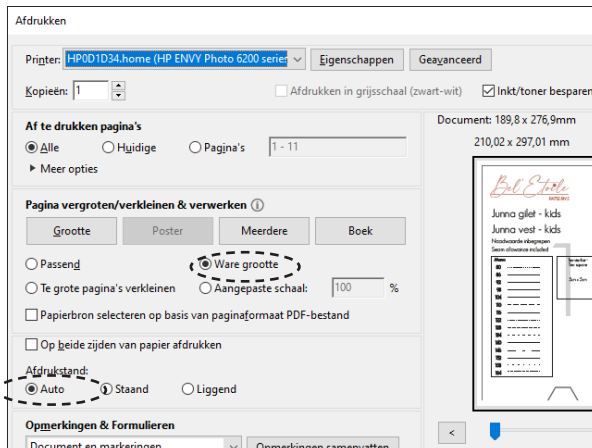
Check the 5x5cm test square on the first page of the pattern before printing everything.

Attention:

Do you own an HP printer?

Go to advanced settings and choose 'print as image'

This will prevent shifting, distorted lines and print your pieces correctly.

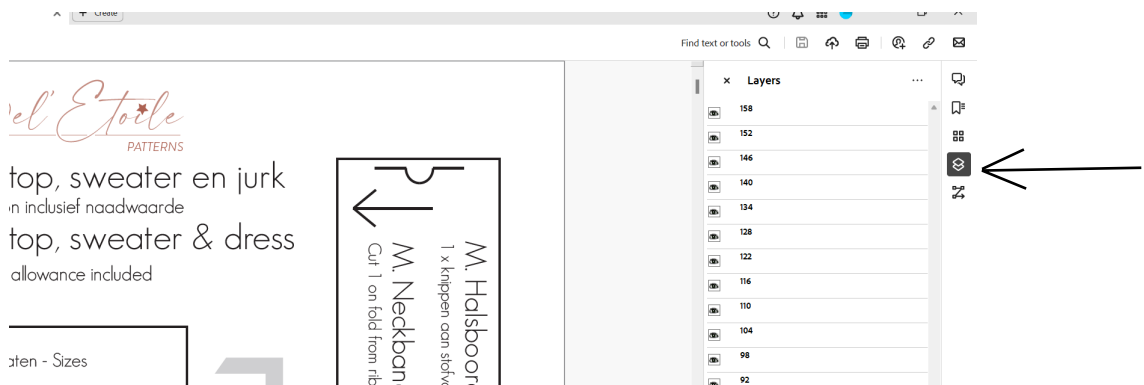


Printing only your own size or your favorite options? You can!

To do so, open the pattern in Adobe Acrobat PDF reader and click on the "layers" icon.

Uncheck all the layers you don't need, except the bottom layer, which contains all the text and marks.

In the table on page 6 you can find which pages to print for which size and/or version.



An A0 size file of the pattern is included for copyshop printing.

Projector file

A projector file is included in the pattern.

Layers:

- patternpieces/size
- calibration layer
- grid layer 10 x 10cm

We include thick solid lines for extra visibility, large font, lots of space around the pattern pieces, mirrored pieces (when necessary) and full pattern pieces with indicated foldline.

About the ISA sweater - stripes & pieces colorblock options.

These 2 colorblock options complement our popular Isa pattern.

With "stripes" you can create a striped sweater where the lines of the front and sleeves match each other.

With "pieces" you can create an asymmetrical front with sleeves that match the lines of the front.

The fit is loose but not oversized.

In this tutorial you will find step-by-step drawings that will seamlessly help you assemble your handmade masterpiece.

Useful charts

Size chart

THE NUMBERS TELL THE TALE!

Measure carefully before determining which size to make.

There can be differences between ready to wear sizes and sewing pattern sizes.

The chest circumference is the determining size, use that measurement as a starting point.

Between 2 sizes?
Go for the bigger one.

Size	80	86	92	98	104	110	116	122	128	134	140	146	152	158
Height	80	86	92	98	104	110	116	122	128	134	140	146	152	158
Chest	50	52	54	55	57	59	61	63	66	69	72	75	78	81

Measurements finished pieces

This table offers an overview of how much ease is added to each size and the length of each garment.

You can compare these measurements to a well fitting garment and make adaptations if necessary.

Size	80	86	92	98	104	110	116	122	128	134	140	146	152	158
Chest circumf sweater	58	60	62,5	65	67,5	70,5	73	76	78,5	81	84	87,5	91	95
Length sweater*	32,5	34,5	36,5	38,5	40,5	42	44	46	48	50	52	54	56	58

* measured from back neck to hem

Recommended fabrics

The Isa top/dress pattern requires stretch fabrics, like french terry, sweater knit, jersey and punta di roma.

For the cuffs, neckband and waistband we recommend ribbing.

If you want to use your main fabrics for this, add 2-3cm to the width of the bands/cuffs.

Required amount of fabric and notions

The amount of fabric is calculated for a fabric width of 140cm.
 Is your fabric narrower? Then keep in mind that you will need more fabric.
 Is your fabric wider? Chances are you will need less fabric.

			80	86	92	98	104	110	116	122	128	134	140	146	152	158
	Sweater Stripes	Color 1	30	35	40	40	40	40	50	50	50	50	50	50	55	60
		Color 2	15	20	20	20	20	20	20	20	20	20	20	20	20	20
		Color 3	15	20	20	20	20	25	30	30	30	30	30	30	30	30
	Sweater Pieces	Color 1	35	40	40	40	40	40	45	45	50	50	50	60	60	70
		Color 2	20	20	20	20	20	20	20	20	20	20	20	20	20	20
		Color 3	20	25	30	30	30	35	35	40	40	40	40	45	45	50
Ribbing			30	30	30	30	30	30	30	30	30	30	30	30	30	30

Seam allowance

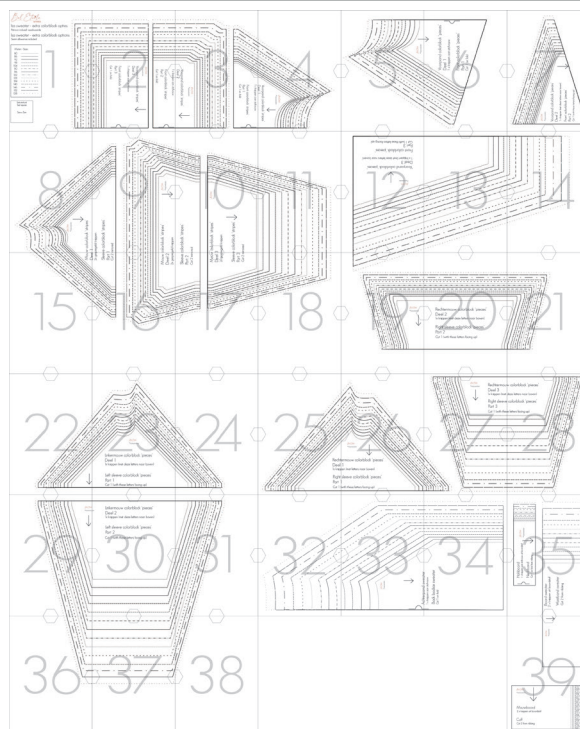
Seam allowance is included in all pattern pieces.
 0cm at the fold and 1cm around.

Pages to print - all sizes

Size	80	86	92	98	104	110	116	122	128	134	140	146	152	158
Front & sleeves Stripes	2-4, 8-10, 15-17	2-4, 8-11, 15-18	2-4, 8-11, 15-18	2-4, 8-11, 15-18	2-4, 8-11, 15-18	2-4, 8-11, 15-18	1-4, 8-11, 15-18	1-4, 8-11, 15-18	1-4, 8-11, 15-18	1-4, 8-11, 15-18	1-4, 8-11, 15-18	1-4, 8-11, 15-18	1-4, 8-11, 15-18	1-4, 8-11, 15-18
Front & sleeves Pieces	5-7, 12-13, 19-31	5-7, 12-13, 19-31	5-7, 12-13, 19-31	5-7, 12-13, 19-31	5-7, 12-14, 19-31	5-7, 12-14, 19-34, 36-38	5-7, 12-14, 19-31, 36-38	5-7, 12-14, 19-31, 36-38	5-7, 12-14, 19-31, 36-38	5-7, 12-14, 19-31, 36-38	5-7, 12-14, 19-31, 36-38	5-7, 12-14, 19-31, 36-38	5-7, 12-14, 19-31, 36-38	5-7, 12-14, 19-31, 36-38
Back*	33-34	33-34	33-34	33-34	33-34	32-34	32-34	32-34	32-34	32-34	32-34	32-34	32-34	32-34
Cuffs & bands*	35 & 39	35 & 39	35 & 39	35 & 39	35 & 39	35 & 39	35 & 39	35 & 39	35 & 39	35 & 39	35 & 39	35 & 39	35 & 39	35 & 39

*You do not need to print the highlighted pages if you have already printed the original 1sa pattern.
 This is because the back bodice and cuffs are identical to those of the existing pattern.

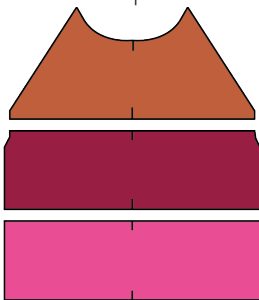
How to tape pages together



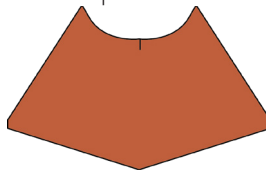
Preparing your pattern pieces

Indicate the following center marks on your pattern pieces.
Do so by giving small clips within the seam allowance.

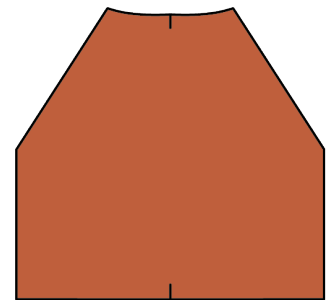
Front
stripes



Front
pieces



Back



Waistband



Neckband



A few examples

Playing with colors and combinations, the possibilities of stripes and pieces become almost infinite ;-).
We're happy to give you some examples:

Stripes



Pieces



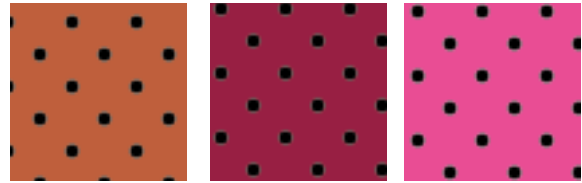
Instructions

We mainly use pictures in this manual.
Some steps are clarified with digital drawings.
You can see the key for that below.

Right side of the fabric



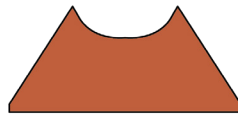
Wrong side of the fabric



1. Assembling the front bodice

A. Stripes

Colorblock part 1



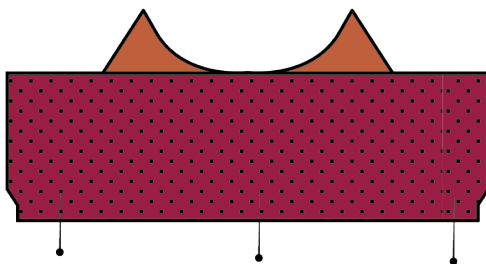
Colorblock part 2



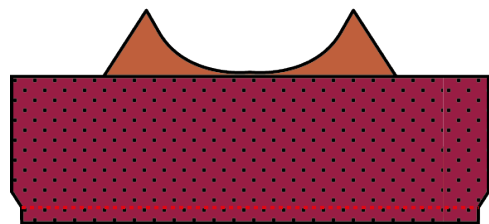
Colorblock part 3



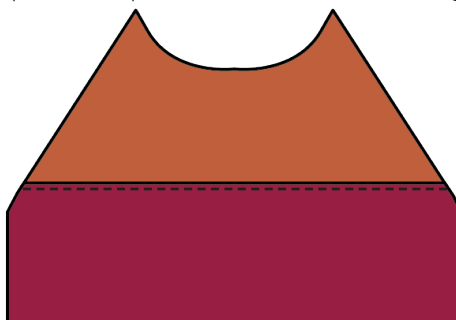
Put part 2 of the color block on top of part 1, right sides together and pin.



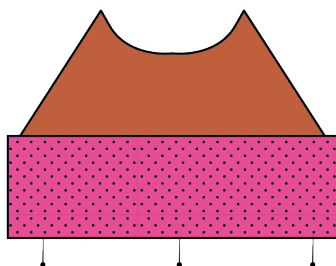
Stitch seam and finish with your overlocker (optional).



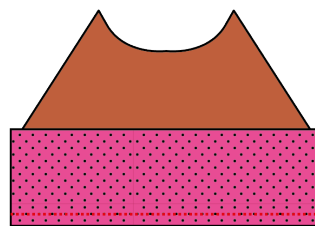
Press seam downwards.
Optional: topstitch at 2mm from the edge.



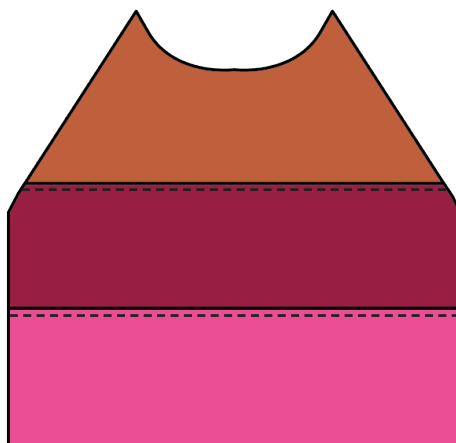
Put part 3 of the color block on top of part 2, right sides together and pin.



Stitch seam and finish with your overlocker (optional).



Press seam downwards.
Optional: topstitch at 2mm from the edge.



Your front is ready!
Go to step 2 on page 9.

B. Pieces

Colorblock part 1

Colorblock part 2

Colorblock part 3



Put part 2 of the color block on top of part 1, right sides together and pin.



Stitch seam and finish with your overlocker (optional).



Press seam upwards.
Optional: topstitch at 2mm from the edge.



Put part 3 of the color block on top of part 1 & 2, right sides together and pin.
Stitch seam.



Finish seam with your overlocker (optional).

Press seam downwards.
Optional: topstitch at 2mm from the edge.



Your front is ready!

2. Assembling the sleeves

The steps for the sleeves is identical for the stripes and pieces option.

With stripes, both sleeves each consist of 3 parts.

With pieces, your right sleeve consists of 3 parts and your left sleeve consists of 2 parts.

Sleeve: 2 parts

Colorblock part 1

Colorblock part 2



Put part 1 of the color block on top of part 2, right sides together and pin.
Stitch seam.



Finish seam with your overlocker (optional).

Press seam downwards.
Optional: topstitch at 2mm from the edge.



This sleeve is ready!

Sleeve: 3 parts

Colorblock part 1

Colorblock part 2

Colorblock part 3



Put part 1 of the color block on top of part 2, right sides together and pin.
Stitch seam.



Finish seam with your overlocker (optional).

Press seam downwards.
Optional: topstitch at 2mm from the edge.



Put part 3 of the color block on top of part 2, right sides together and pin.
Stitch seam.



Finish seam with your overlocker (optional).
Press seam downwards.
Optional: topstitch at 2mm from the edge.



This sleeve is ready!

3. Finishing

To finish your sweater I'm happy to refer you to the original instructions of the lsa pattern.

Follow steps 3 to 7 and your sweater is ready!

Share your creation!
Use hashtags #isasweater, #isadress en #isapattern making sure everyone can find and admire your lsa :-).

www.beletoile.com
www.instagram.com/_beletoile
www.facebook.com/beletoileblog